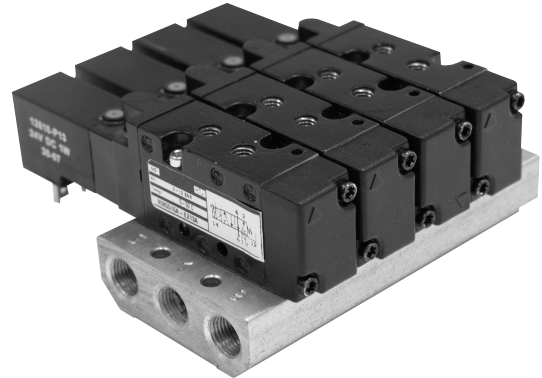


Integrally ported 5/2 and 5/3 Spool valves
Solenoid actuated and pilot operated
Ø 4, Ø 6 mm or M5

High flow from 17 mm body width
Wide range of voltages available
Low profile fixed length manifolds



Technical data

Medium:

Compressed air, filtered to 40 µm lubricated and non-lubricated

Operation:

Spool valve, indirectly actuated

Mounting:

Through holes in fixed length manifold

Port sizes:

M5, Ø 4 mm and Ø 6 mm (with connector blocks)

Operating pressure:

Maximum 10 bar

See individual details overleaf

Flow Characteristics:

Size	Function	'C'	'b'	'A'	l/min	Cv	Kv
M5	5/2	1	0,55	4,23	256	0,26	0,22
Ø 4mm	5/2	0,9	0,54	3,74	226	0,23	0,2
Ø 6mm	5/2	1,4	0,42	5,7	344	0,35	0,3
M5	5/3 APB	1,22	0,32	4,89	296	0,3	0,26

Ambient temperature:

-20°C to +80°C pilot models

-20°C to +50°C solenoid models

(consult our Technical Service for use below +2°C)

Materials

Body: zinc alloy

End caps: glass filled

Spool: aluminium

Seals: bonded nitrile rubber

Bases: glass filled co-polymer

Ordering information

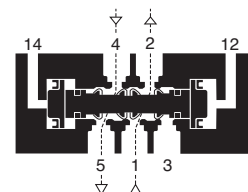
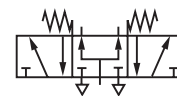
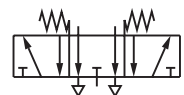
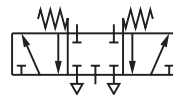
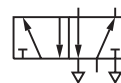
See page 2

Multipole systems

For multipole valve islands please see data sheet 5.1.211

Accessories

Connector plugs and light emitting seals see section 7.7.001.



General information 5/2 solenoid actuated valves

Symbol	Model	Manual override	Solenoid pilot	Operator	Return	Operating pressure (bar)	Pilot pressure (bar)	Weight (kg)	Spares kit
	V085516A-#21*A	Screwdriver, bi-stable	Internal	Solenoid	Spring and air	3 ... 10	-	0,155	V10034-K00
	V085516A-#31*A	Push only							
	V085511A-#21*A	Screwdriver, bi-stable	Internal	Solenoid	Solenoid	2 ... 10	-	0,198	V10034-K00
	V085511A-#31*A	Push only							

5/3 Solenoid actuated valves

Symbol	Model override	Manual Supply	Pilot	Operator Position	Mid	Return	Operating pressure (bar)	Pilot pressure (bar)	Weight (kg)	Spares kit
	V085611A-#21*A	Screwdriver, bi-stable	Internal	Solenoid	APB	Solenoid	-0,9 ... 10	-	0,158	V10034-K01
	V085611A-#31*A	Push button								
	V085711A-#21*A	Screwdriver, bi-stable	Internal	Solenoid	COE	Solenoid	-0,9 ... 10	-	0,158	V10034-K02
	V085711A-#31*A	Push button								
	V085811A-#21*A	Screwdriver, bi-stable	Internal	Solenoid	COP	Solenoid	-0,9 ... 10	-	0,158	V10034-K03
	V085811A-#31*A	Push button								

Insert pin orientation: E=up, D=down

* Insert voltage code from table below.

APB = All Ports Blocked, COE = Centre Open Exhaust, COP = Centre Open Pressure.

Pilot actuated valves

Symbol	Model	Manual override	Solenoid pilot	Operator	Return	Operating pressure (bar)	Pilot pressure (bar)	Weight (kg)	Spares kit
	V085536A-X0130	-	Pressure	-	Spring and air	2 ... 10	1,5 + 0,5 x supply	0,152	V10034-K00
	V085533A-X0020	-	Pressure	-	Pressure	1 ... 10	2 ... 10	0,141	V10034-K00
	V085633A-X0020	-	Pressure	APB	Pressure	1 ... 10	Minimum 2 bar	0,119	V10034-K01
	V085733A-X0020	-	Pressure	COE	Pressure	1 ... 10	Minimum 2 bar	0,119	V10034-K02
	V085833A-X0020	-	Pressure	COP	Pressure	1 ... 10	Minimum 2 bar	0,119	V10034-K03
	V085533A-X0060	-	Pressure	-	Pressure	-0,9 ... 10	Minimum 2 bar	0,119	V10034-K00

APB = All Ports Blocked, COE = Centre Open Exhaust, COP = Centre Open Pressure.

Ordering information

To order, quote model number and voltage code from tables overleaf, e.g. V085516A-E213A for a Solenoid Pilot Actuated, Spring and Air Return model fitted with a 24 V d.c. coil (pin up configuration) and screwdriver operated manual override. Valve Islands - for complete pre-assembled valve islands please contact our technical service.

Voltage codes and spare solenoid kits

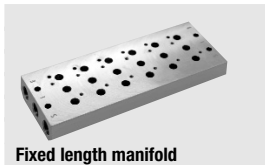
Voltage	Code	Power	Solenoid Kit Part Number			
			Push MO Pin Up	Pin Down	Turn MO Pin Up	Pin Down
12 V d.c.	2	1 W	V12862-P12	V12861-P12	V12862-T12	V12861-T12
24 V d.c.	3	1 W	V12862-P13	V12861-P13	V12862-T13	V12861-T13
24 V a.c. 50/60 Hz	4	1 W	V12862-P14	V12861-P14	V12862-T14	V12861-T14
110 V a.c. 50/60 Hz	8	1 W	V12862-P18	V12861-P18	V12862-T18	V12861-T18
240 V a.c. 50/60 Hz	9	1 W	V12862-P19	V12861-P19	V12862-T19	V12861-T19

Electrical details for solenoid operators

Voltage tolerances:	-10/+15%
Rating:	100% E.D.
Inlet orifice:	0,8 mm
Electrical connection:	DIN 43650 table 'C'
Manual override:	V0855**A-*21*A Screwdriver bi-stable V0855**A-*31*A Push button, spring return
Protection class:	IP 65 (DIN 40050)

For details of connector plugs and light emitting seals see section 7.7.001.

Manifold



Fixed length manifold

- V10026-G02 (2 stations)
- V10026-G04 (4 stations)
- V10026-G06 (6 stations)
- V10026-G08 (8 stations)
- V10026-G10 (10 stations)
- V10026-G12 (12 stations)

Accessories



Optional port connector blocks	Blanking plate	Blanking plug
V085516A-Q0404, Ø 4 mm	V095516A-Q1100	V10511-K01
V085516A-Q0406, Ø 6 mm	-	-

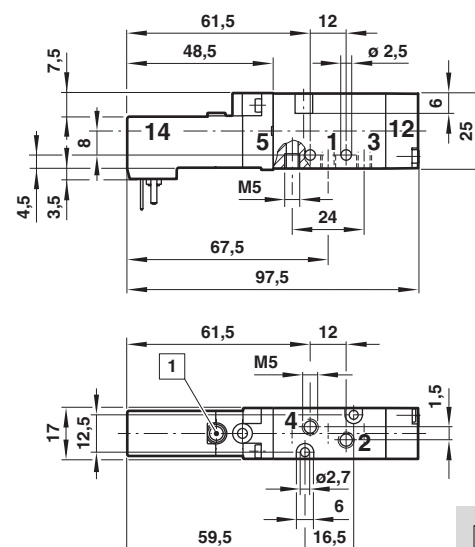
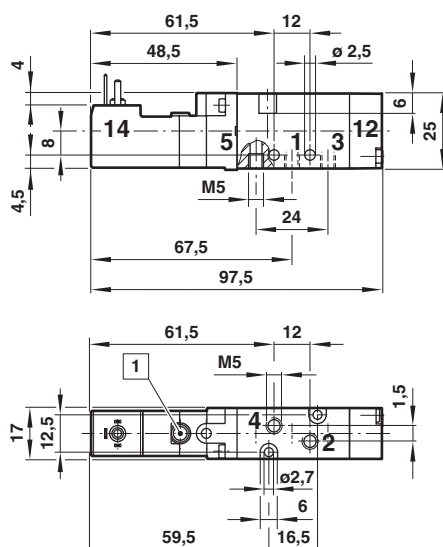
Basic dimensions

V085516A-E... models

5/2 Single solenoid valve, pin orientation up

V085516A-D... models

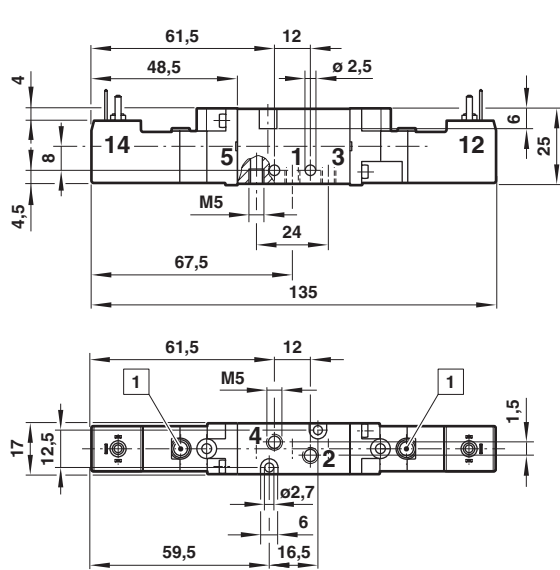
5/2 Single solenoid valve, pin orientation down



1 Manual override

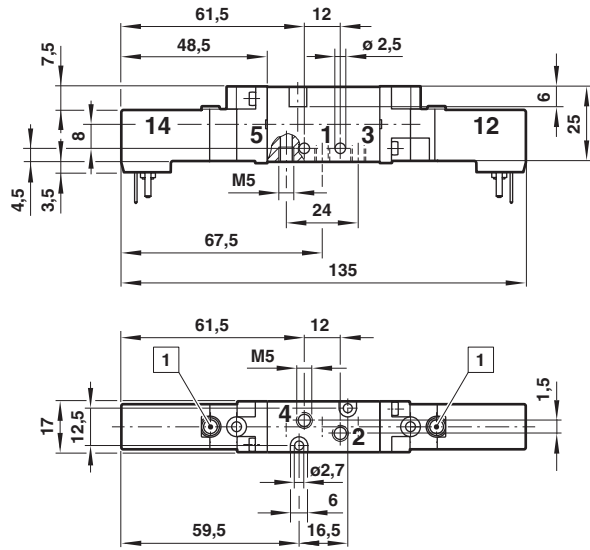
V085511A-E... models

5/2 Double solenoid valve, pin orientation up



V085511A-D... models

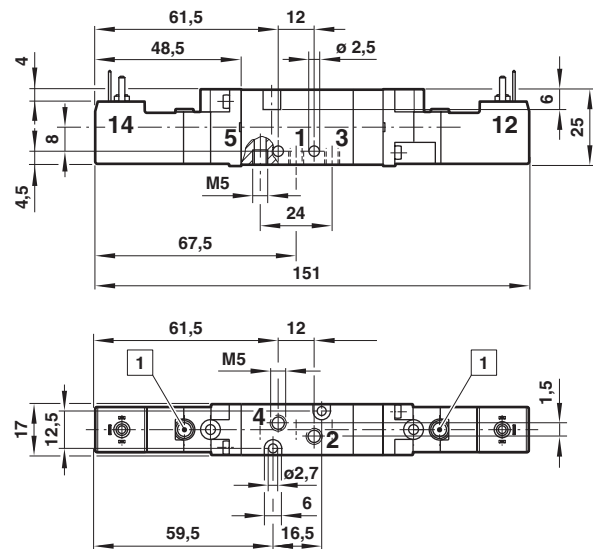
5/2 Double solenoid valve, pin orientation down



1 Manual override

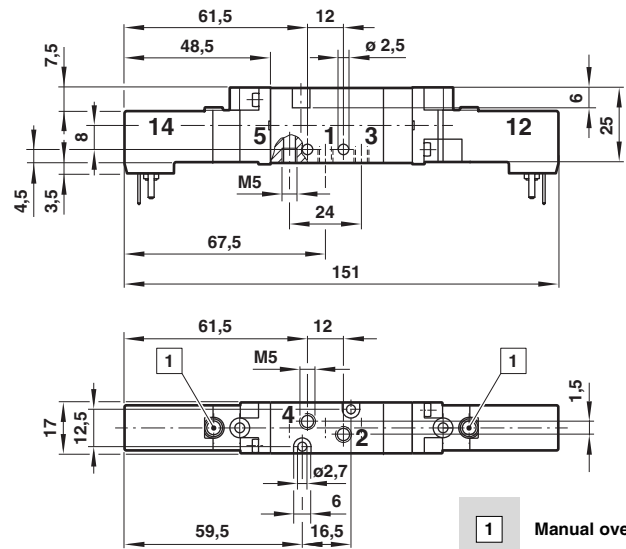
V085*A-E... models**

5/3 Double solenoid valve, pin orientation up



V085*11A-D... models

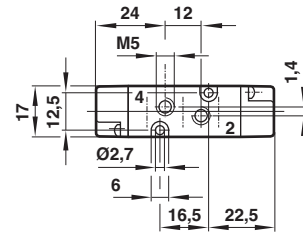
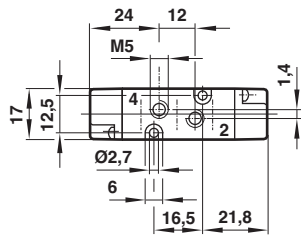
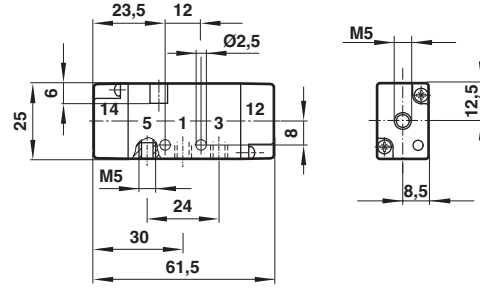
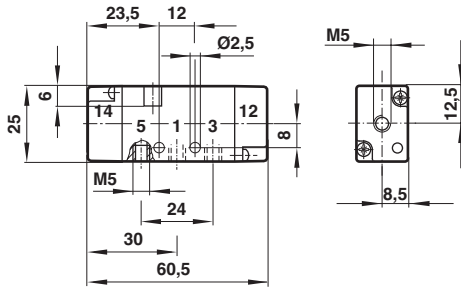
5/3 Double solenoid valve, pin orientation down



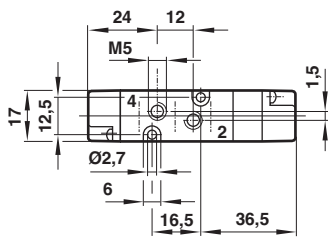
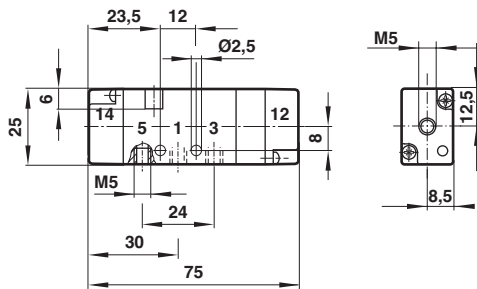
1 Manual override

**V085536A-X0130 model
5/2 Single pilot valve**

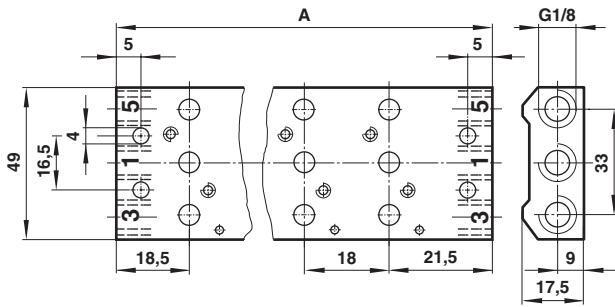
**V085533A-X0020 and V085533A-X0060
5/2 Double pilot valves**



**V085*33A-X0020 model
5/3 Double pilot valve**



Fixed length manifold

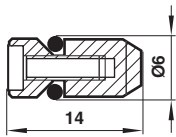


Type	No. of stations	A
V10026 - G02	2	58
V10026 - G04	4	94
V10026 - G06	6	130
V10026 - G08	8	166
V10026 - G10	10	202
V10026 - G12	12	238

Note: Gaskets and valve fixing screws are supplied with these manifolds.

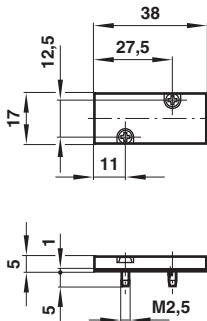
Blanking plugs V10511-K01

For dual pressure supply on fixed length manifold.



Blanking plate V095516A-Q1100

Blanking plate for blocking off unwanted stations.



Warning

These products are intended for use in industrial compressed air systems only. Do not use these products where pressures and temperatures can exceed those listed under 'Technical Data'.

Before using these products with fluids other than those specified, for non-industrial applications, life-support systems, or other applications not within published specifications, consult NORGREN.

Through misuse, age, or malfunction, components used in fluid power systems can fail in various modes.

The system designer is warned to consider the failure modes of all component parts used in fluid power systems and to provide adequate safeguards to prevent personal injury or damage to equipment in the event of such failure.

System designers must provide a warning to end users in the system instructional manual if protection against a failure mode cannot be adequately provided.

System designers and end users are cautioned to review specific warnings found in instruction sheets packed and shipped with these products.