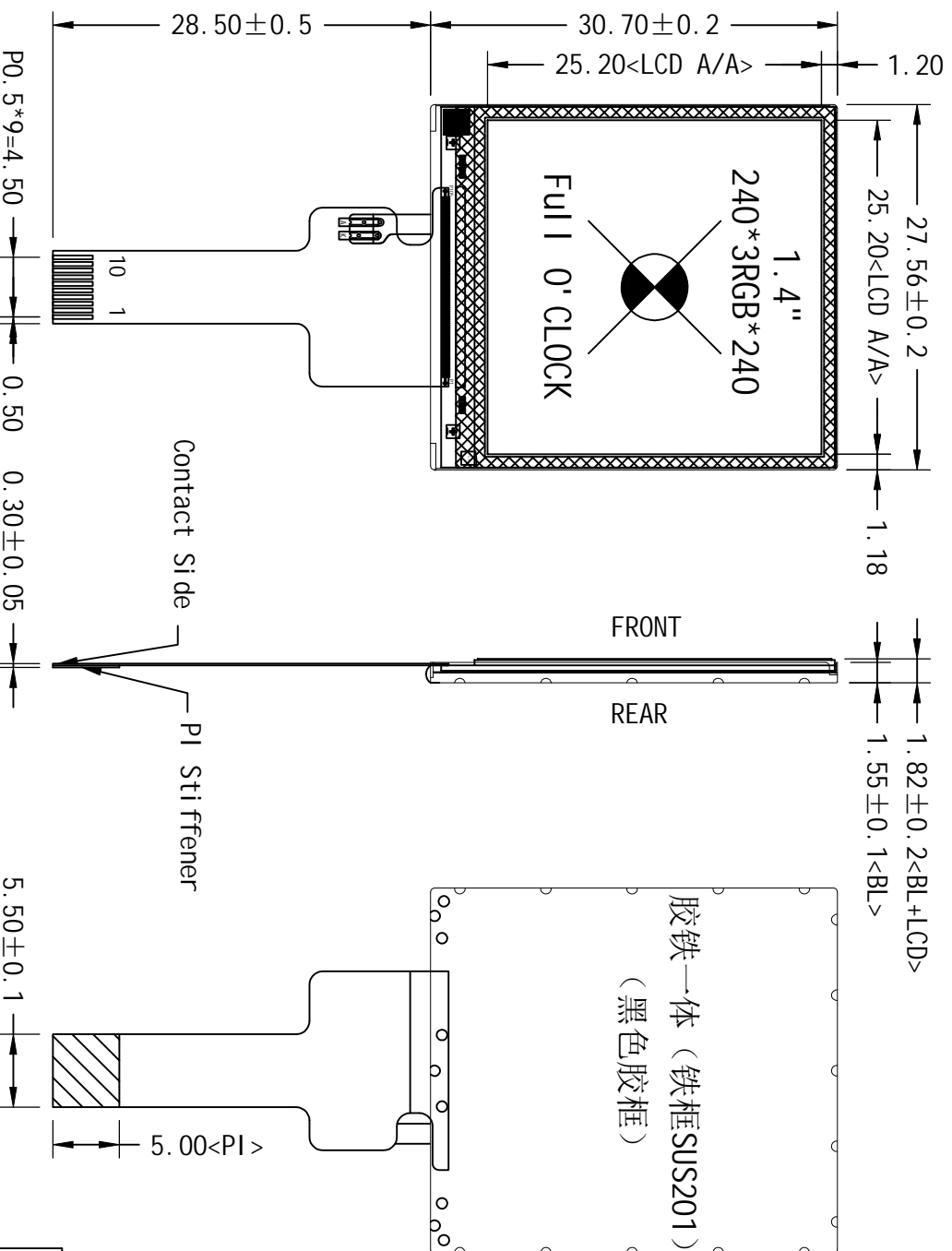


*** Do not display the fixed pattern for a long time when using a normally black panel, as it may cause image sticking due to the LCM structure. If the screen is displayed in fixed mode, use a screen saver. It is recommended to display the fixed mode in less than 2 minutes or less.

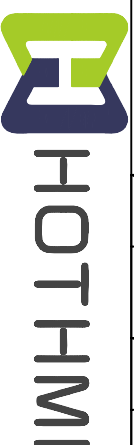
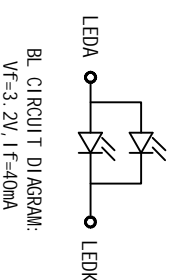


SPI 4W	SPI Mode	Use Pins
0	SPI 3L	CS, SDA, SCK
1	SPI 4L	CS, SDA, SCK, D/CX

Note: Fix to GND level when not in use.

Pin_SIGNAL	Pin_SIGNAL
1	LEDA
2	VCI
3	CS
4	RESX
5	SCK
6	SDA
7	D/CX
8	SPI 4W
9	LEDK
10	GND

Item	Parameter	Value
*1.	LCD Display Type	TFT/Transmissive/Normally Black/262K Color
*2.	Viewing Direction	Full 0' Clock (L80/R80/L80)
*3.	Interface	SPI 3L/4L
*4.	Operating Voltage	VCI=2.8V, IONCC=1.8V (Typ)
*5.	Operating Temp	-20° C~70° C
*6.	Storage Temp	-30° C~80° C
*7.	Driver IC	ST7789
*8.	Backlight	WHITE VF=3.2V I F=40mA (Typ)
*9.	LCM Brightness	400 cd/m ² (Typ)



Part Number: TFT-H014A3D01 ST4N10

Scale	1:1	Unit	MM	Tolerance	±0.3	Symbol	
Ver.	V0	Drawn	Liu	Date	2021-04-19		